

Contact point:

Chief researcher: Tetsuya Kojima

Marine Pollution Research Laboratory, Environmental and
Oceanographic Research Division, Hydrographic and

Oceanographic Department

Tel: 03-3541-4389



October 28, 2011

Japan Coast Guard

Results of Radiation Monitoring Offshore of Fukushima and Ibaraki Prefectures

Japan Coast Guard has long been conducting radiation monitoring in sea areas around Japan. We preferentially analyzed data obtained in offshore areas of Fukushima and Ibaraki prefectures, which are within the target of the sea area monitoring being conducted in response to the accident at TEPCO's Fukushima Dai-ichi NPP. We have compiled the results as follows.

Monitoring Results

Sampling point	Sampling time and date	Latitude and longitude	Depth of sampling point (m)	Radioactive concentration		
				Cs-134	Cs-137	Sr-90
Offshore of Fukushima (KH-2)	8:13 on Aug. 27, 2011	37°30.4'N: 142°59.8'E (Approx. 180km to the east of Fukushima prefecture)	1m from the surface	0.044	0.072	0.0027
Offshore of Ibaraki (KH-1)	14:39 on Aug. 27, 2011	36°00.5'N: 142°15.5'E (Approx. 140km to the east of Ibaraki prefecture)	1m from the surface	ND *	0.0015	0.0006

*ND shows that the detected value was below the detection limit (0.001Bq/L for Cs-134).

Seawater samples were collected by Japan Coast Guard's surveying vessel "Shoyo," and the Hydrographic and Oceanographic Department conducted the analysis. These results of the analysis will be compiled by the Minister of Education, Culture, Sports, Science and Technology (MEXT), together with other survey results of other organizations, into a part of TEPCO's Fukushima Dai-ichi NPP-related monitoring results.

(Reference)

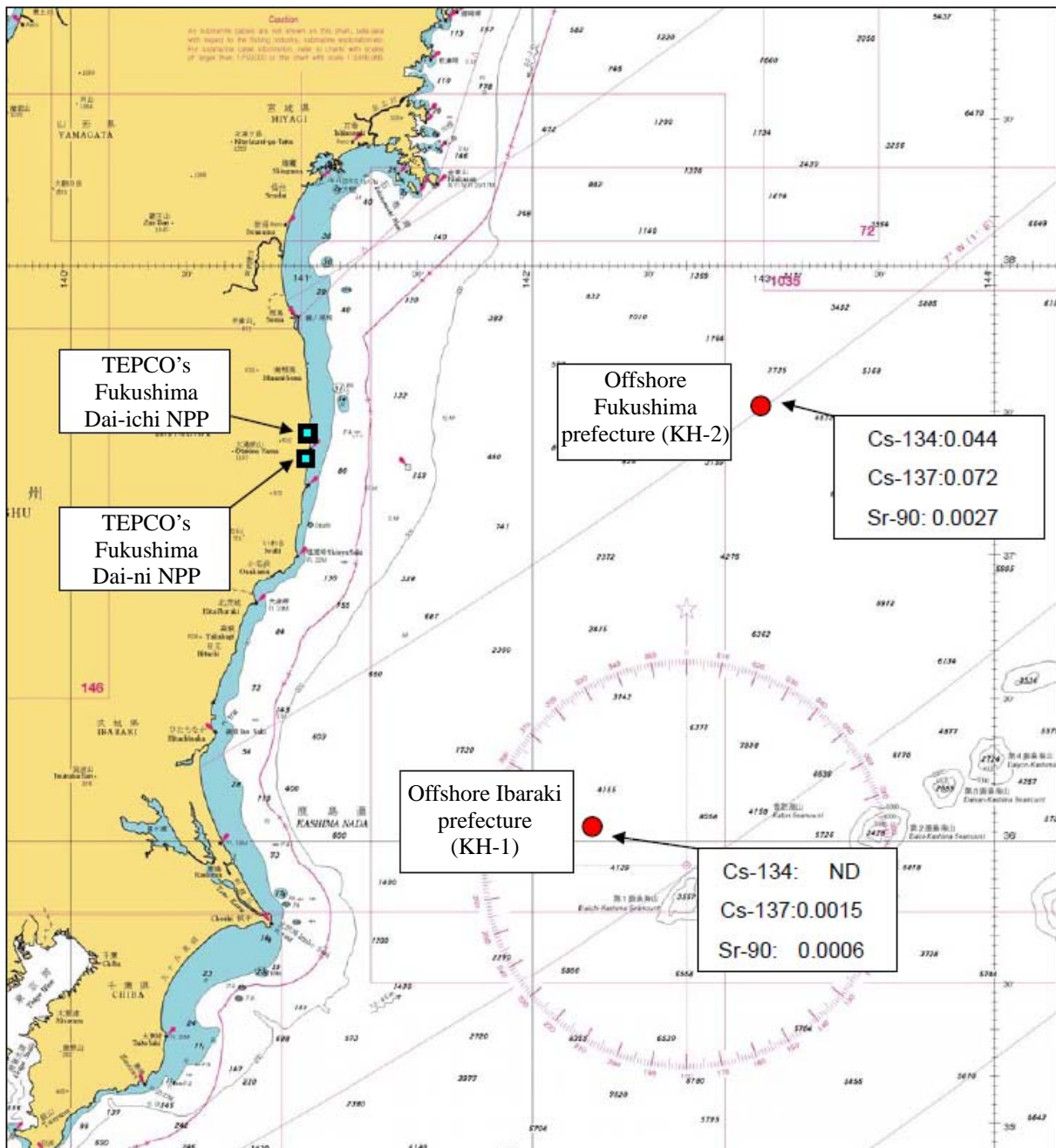
Japan Coast Guard has long been conducting radiation monitoring in sea areas around Japan and has publicized the results thereof on the website of the Hydrographic and Oceanographic Department, etc.

These monitoring points offshore of Fukushima and Ibaraki prefectures are included in the sea area monitoring points specified in the Comprehensive Monitoring Plan decided in response to the accident at the Fukushima Dai-ichi NPP (by the Monitoring Coordination Meeting on August 2, 2011).

Results of Sea Area Monitoring Offshore of Fukushima and Ibaraki Prefectures

(Sampling on August 27, 2011)

(Unit: Bq/L)



*ND shows that the detected value was below the detection limit (0.001Bq/L for Cs-134).